

1888.

100

26

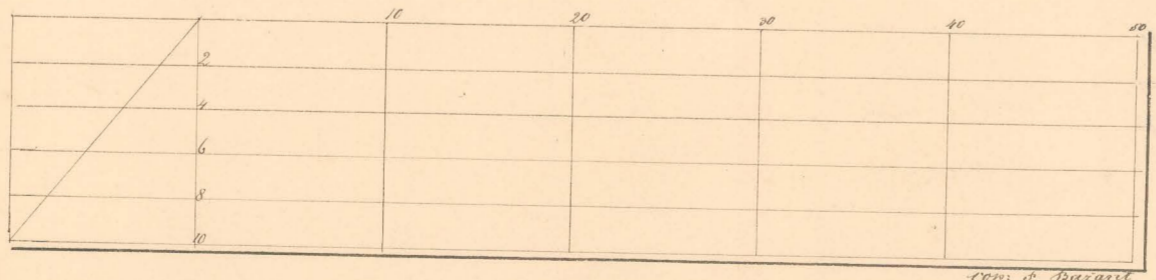
II. d

Bergbau Höhlen.



K. K. GEOLOGISCHE
REICHSANSTALT

1/1



Aufgenommen A. Schmidt 7. 1888

von A. Bogner

112

II. d

V. H.

1886

106

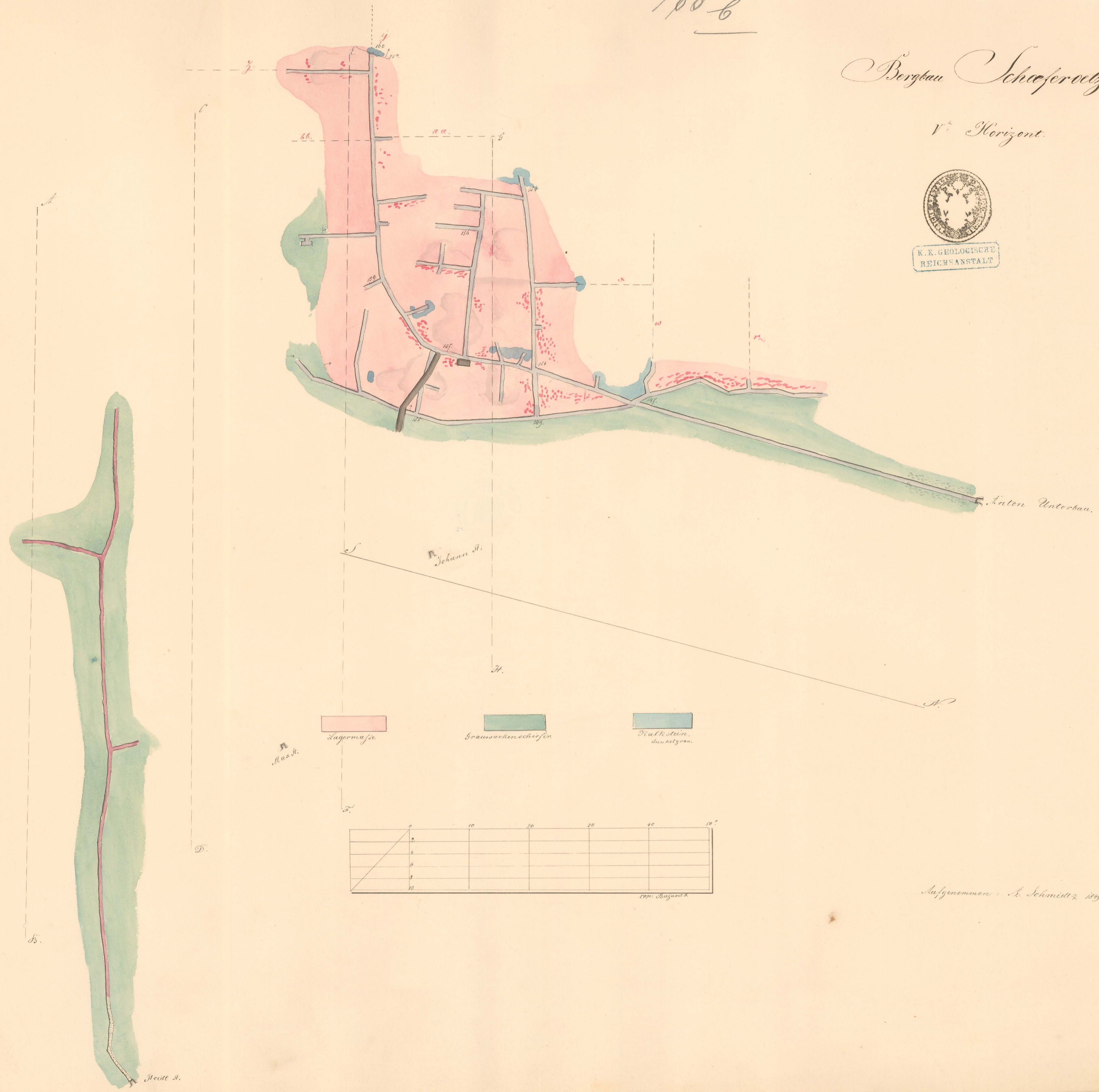
26

Bergbau Schieferitz

V. Horizont.



K.K. GEOLOGISCHE REICHSANSTALT



Aufgenommen: A. Schmidt, 1889

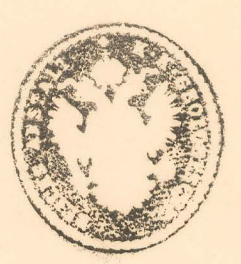
1886

160
W

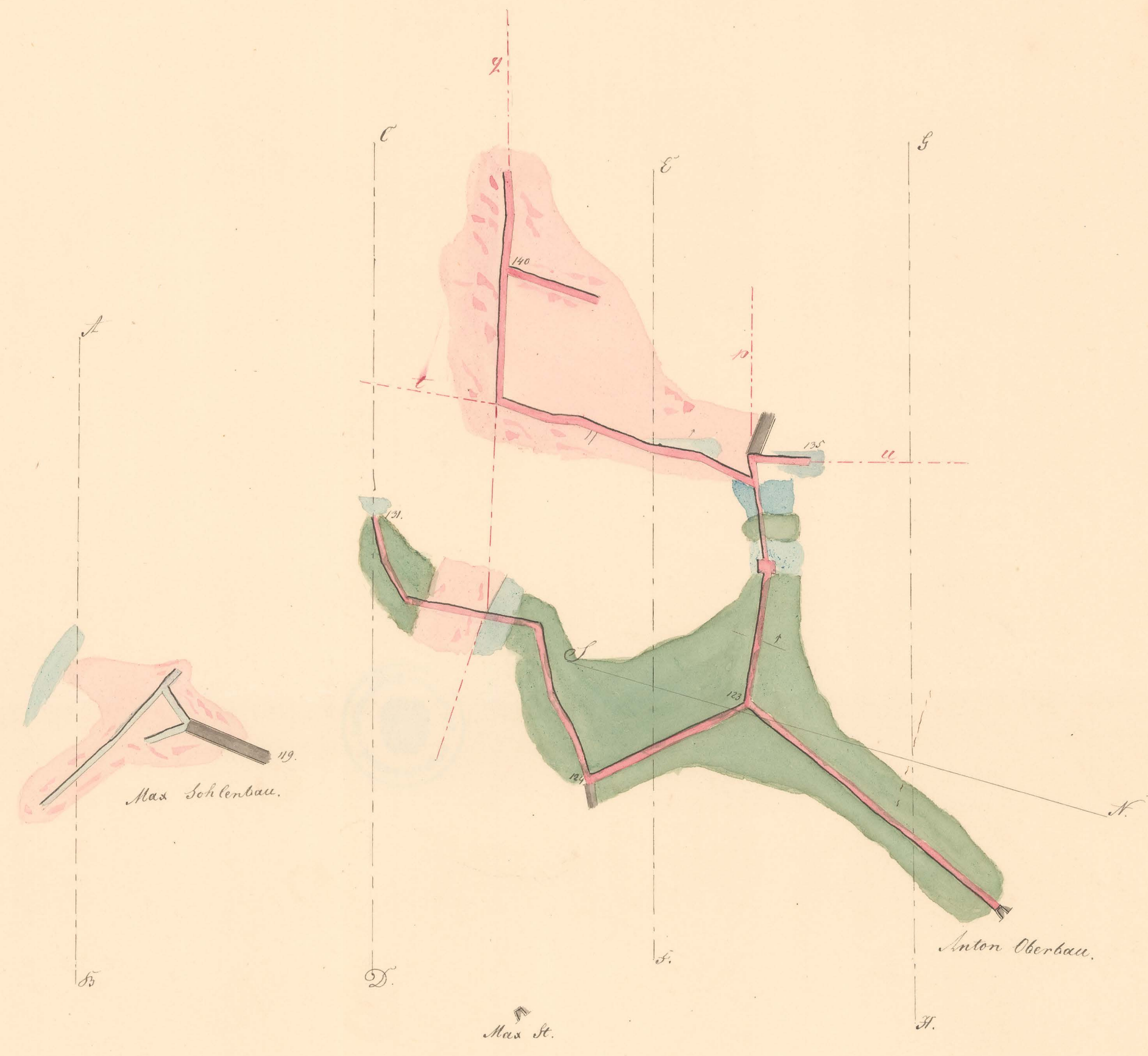
II. d

Bergbau Schieferitz

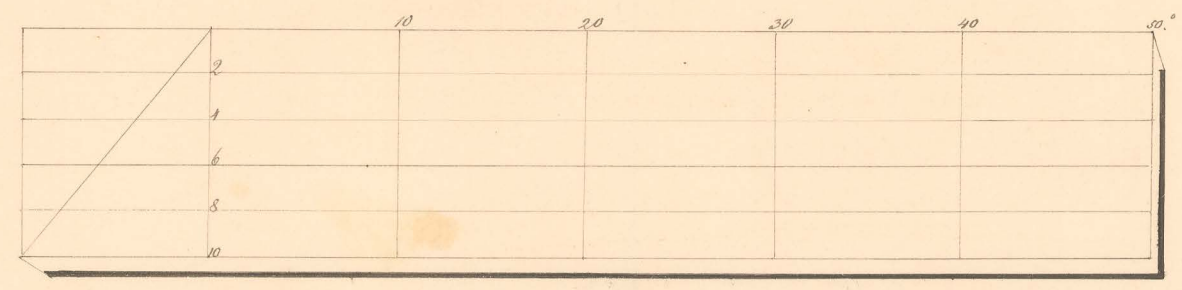
II^{te} Horizont.



K. K. GEOLOGISCHE
REICHSANSTALT



Brauneisenschiefer.
 Thalk. schiefer.
 Lagermaße.



Entworfen v. A. Schmidt z. 1886

70

II. d

V/11

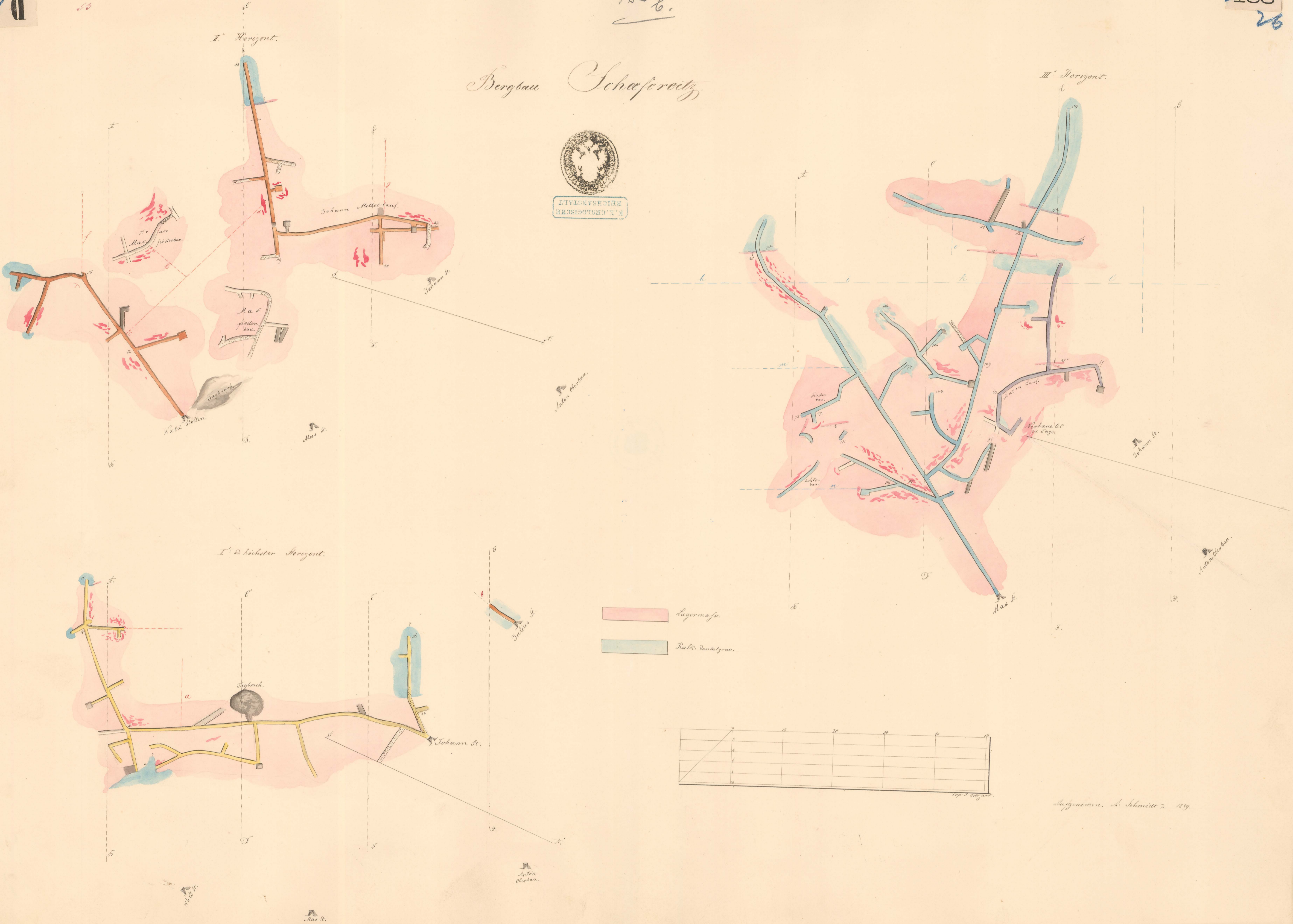
1886.

100
26

Bergbau Schafersitz



GEOL. ANST. WIEN

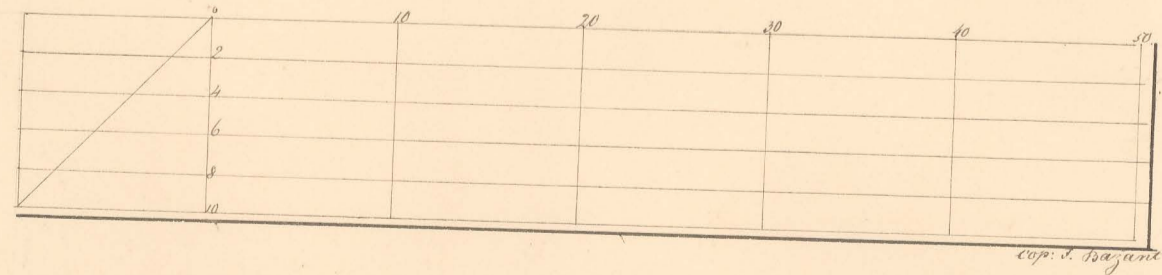


I. Horizont.

III. Horizont.

I' der höchsten Horizont.

Lagermaße.
 Kalt. Quarzite.



Entnommen. A. Schmitt 7. 1879.

II d

1898
Durchschnitt A.B.

Schäfferözy

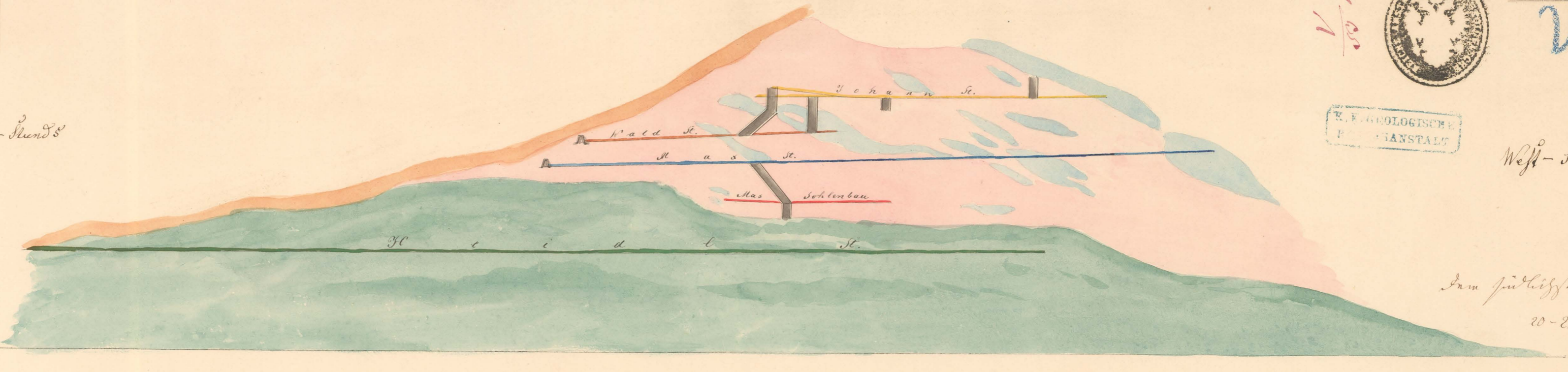


166
W

GEOLOGISCHE
LANDESANSTALT

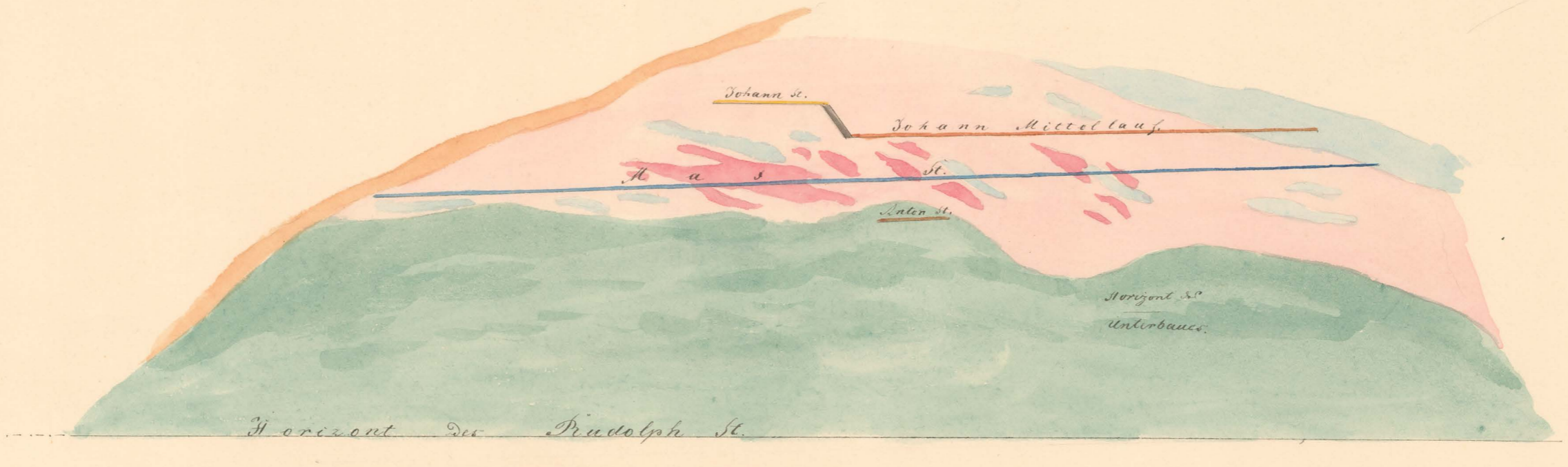
Welf-Stadt

Ost-Stadt

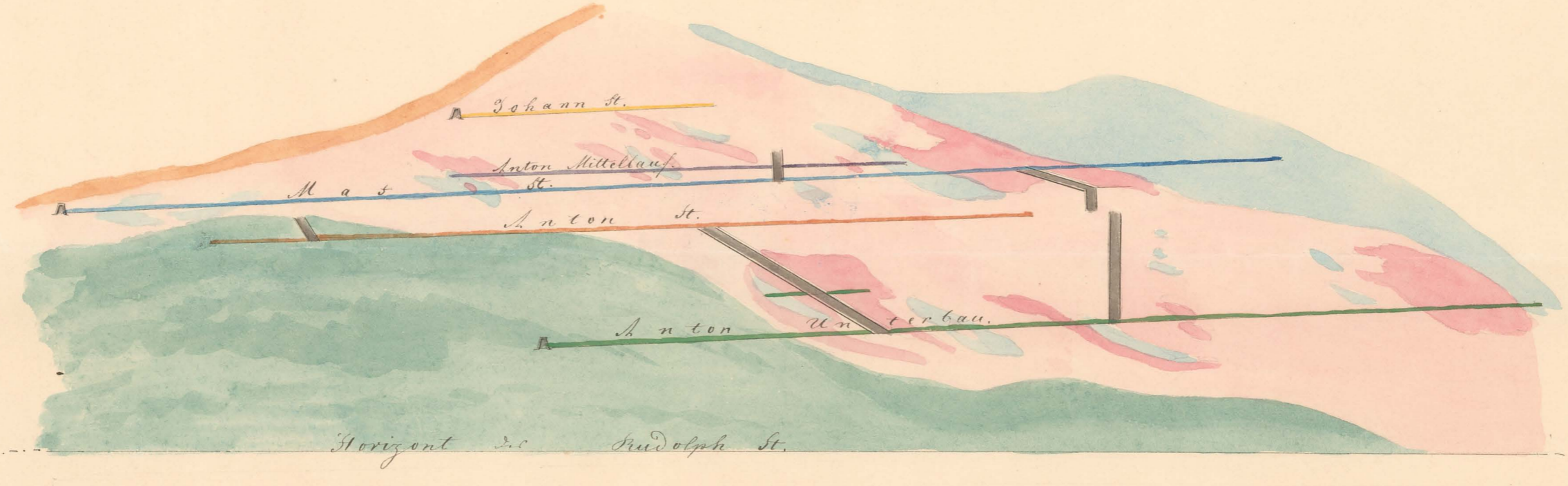


Am südlichen
20-25° N

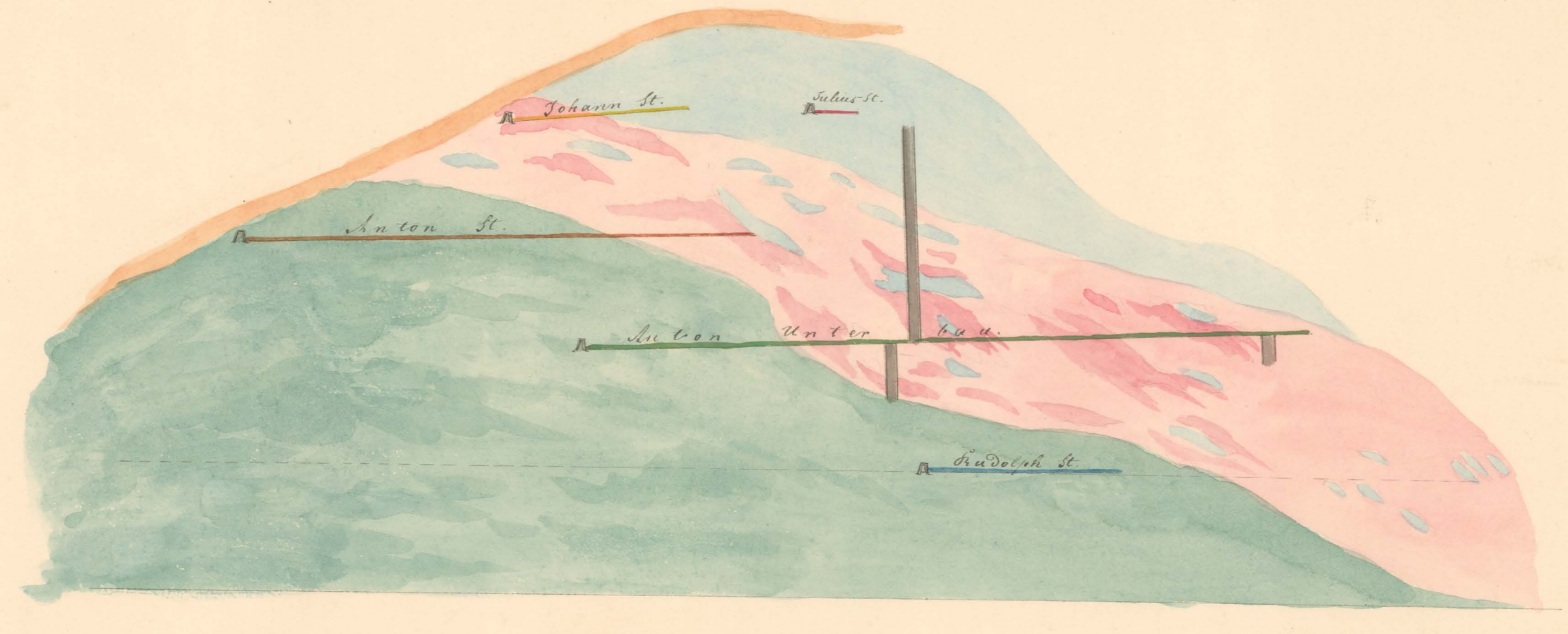
Durchschnitt C.D.



Durchschnitt E.F.

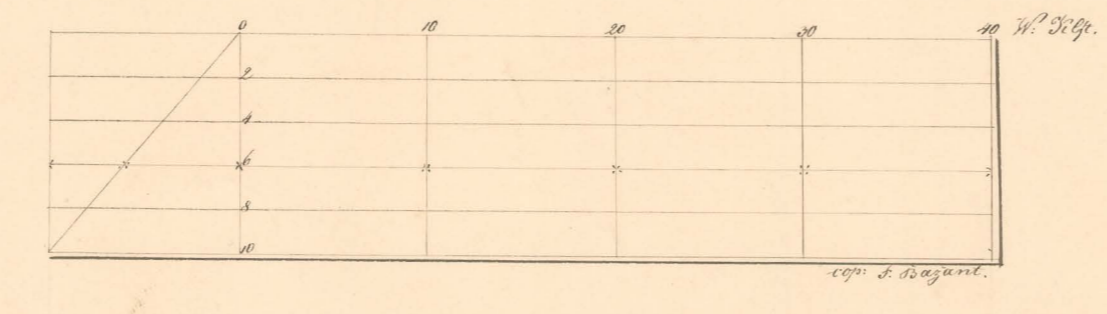


Durchschnitt G.H.



Am südlichen

Trümmerstein
Kalkstein
Ergänzung



Entworfen v. Schmitt 1898

(entworfen)

Eisensteinbau bei Welf

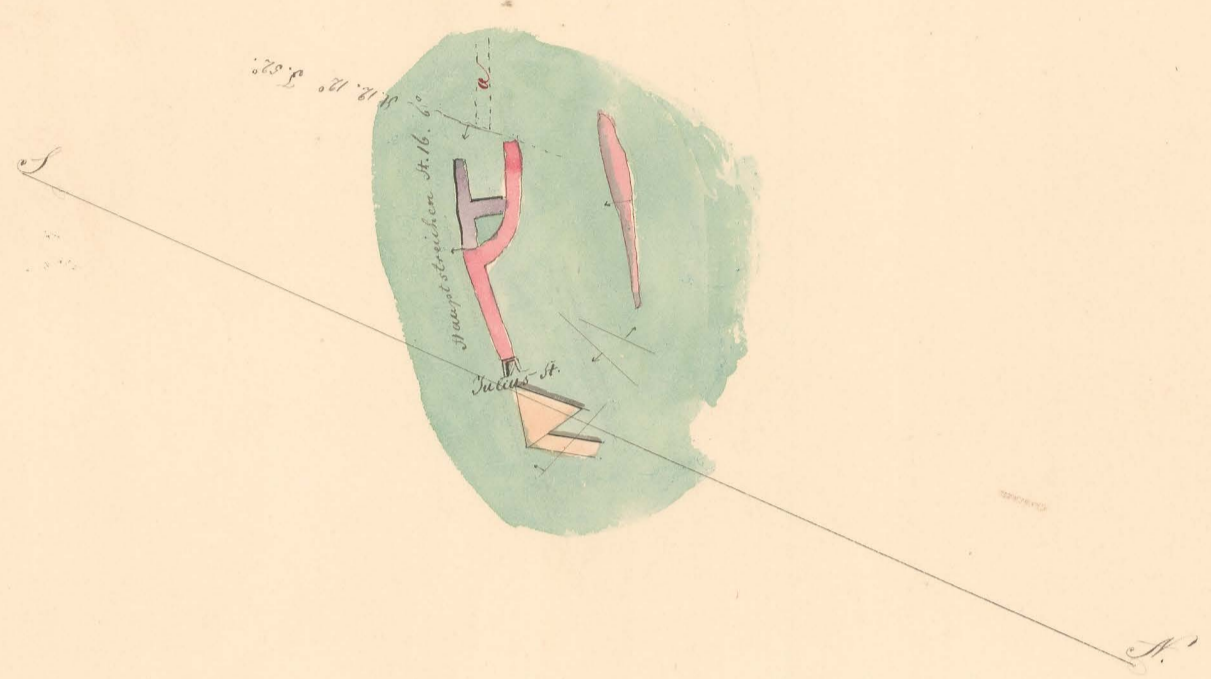
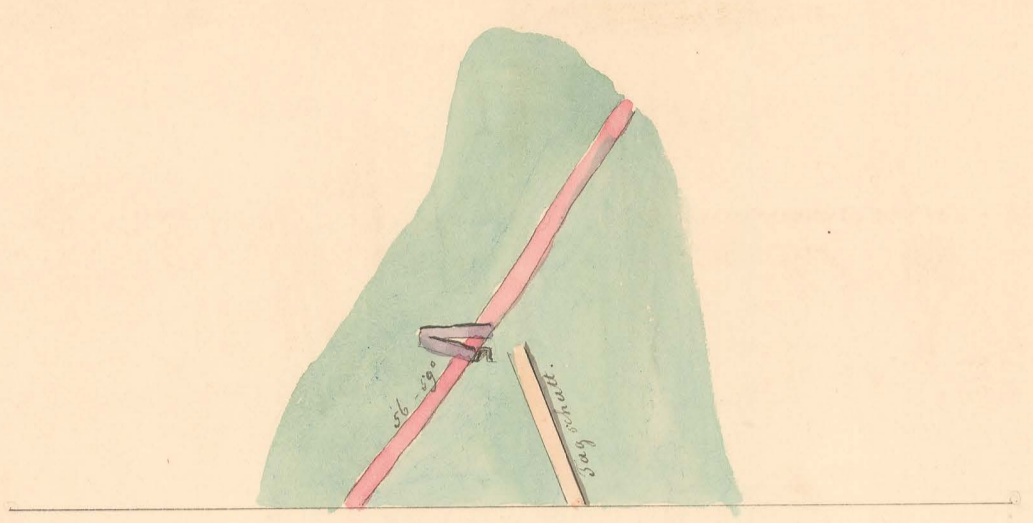
II d

Spatheisenstein Bergbau Bachsfall.

166

W

Lehrer ... v. ... Schmidt ... 1888



1888

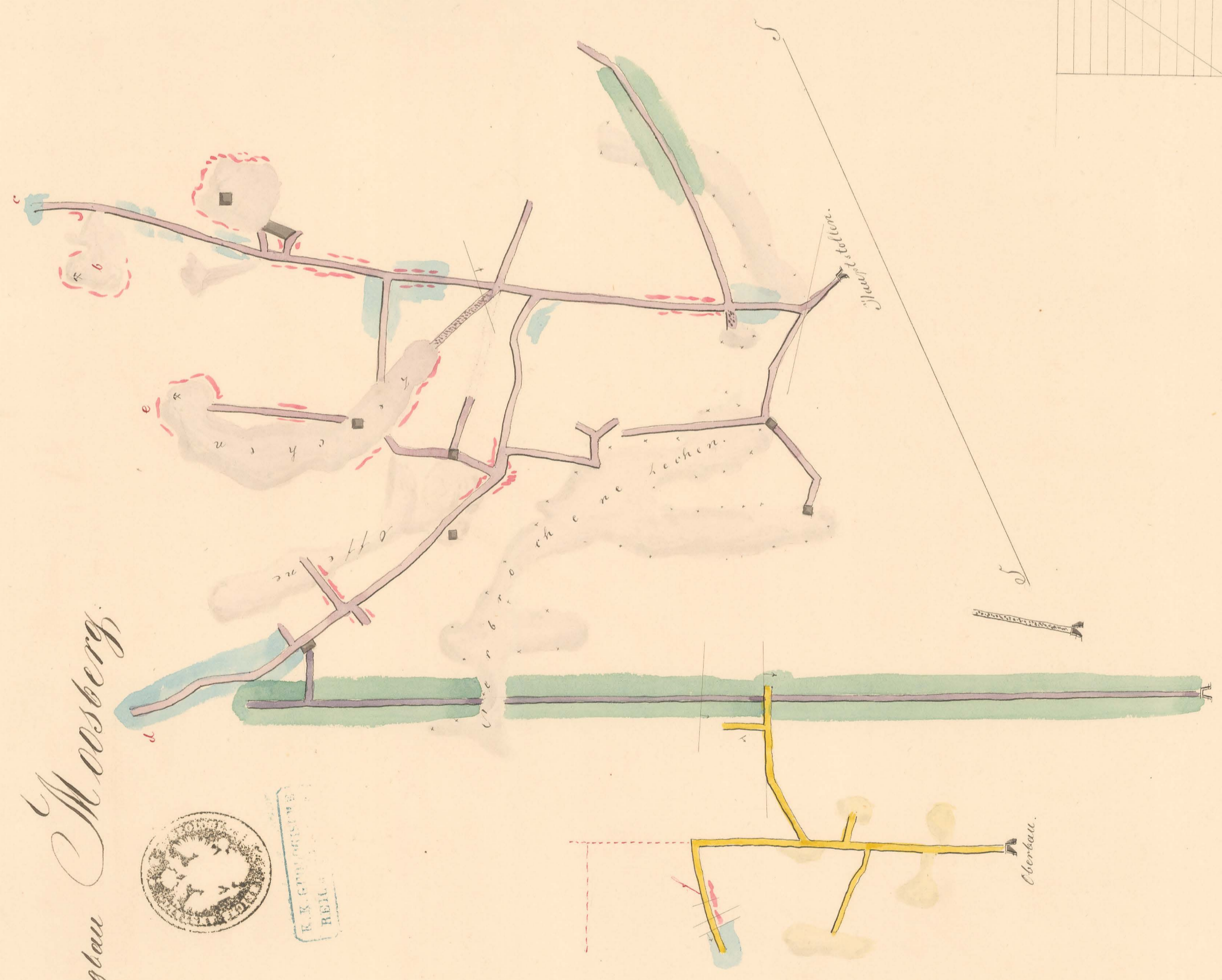
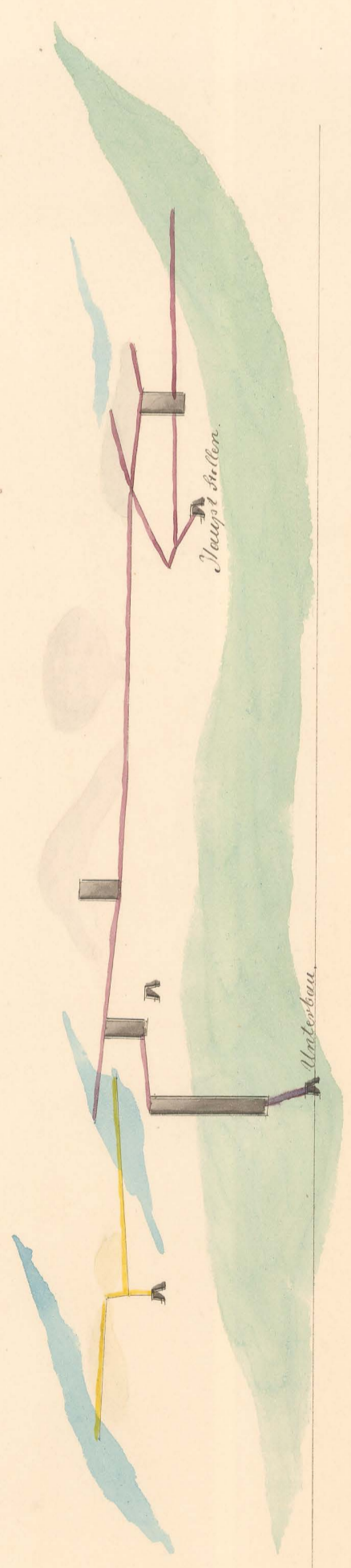


Table with 10 columns and 10 rows, possibly a grid or scale.

CD

1/50

Bergbau Mausberg



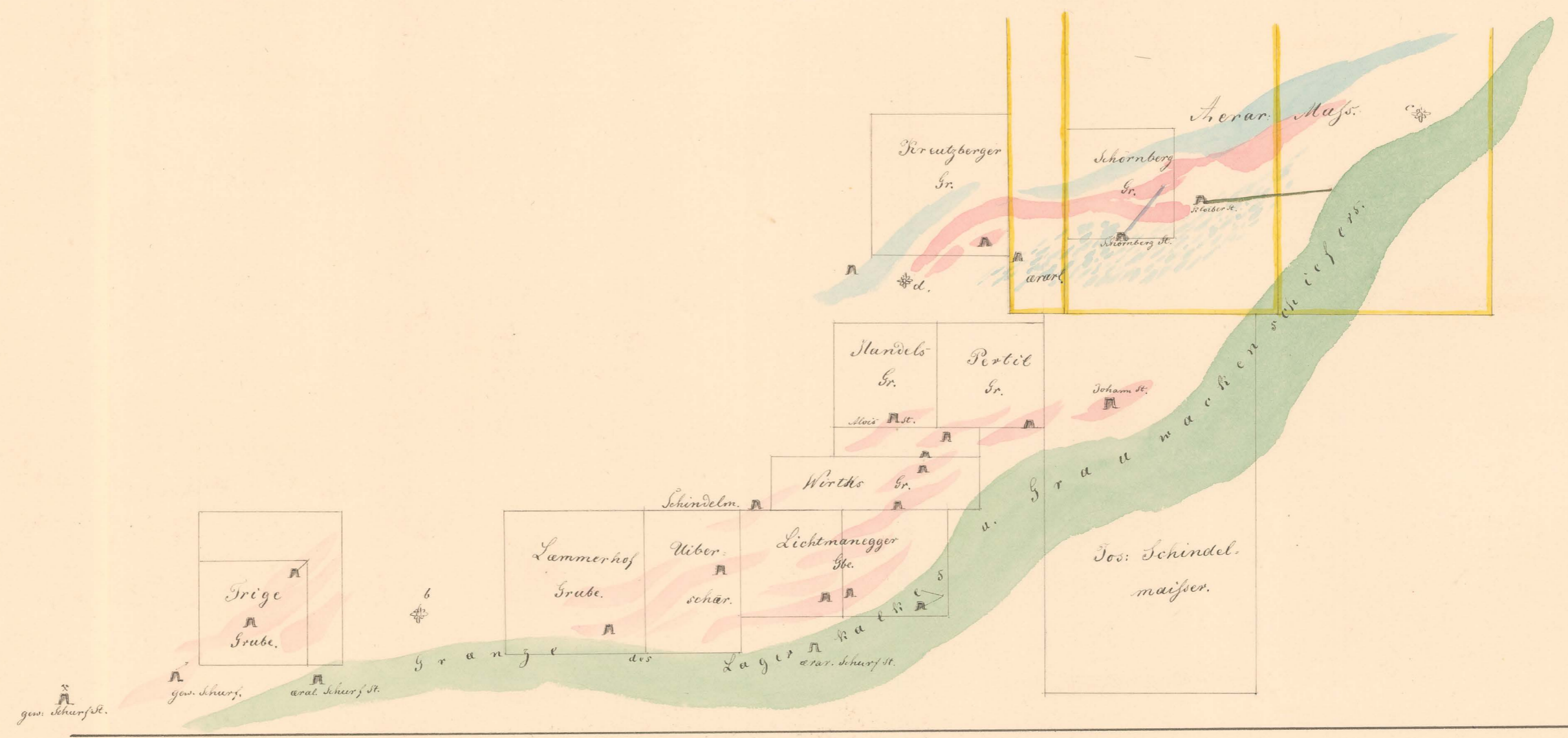
K. K. GEODÄSISCHES BEZUGS

II. d

188

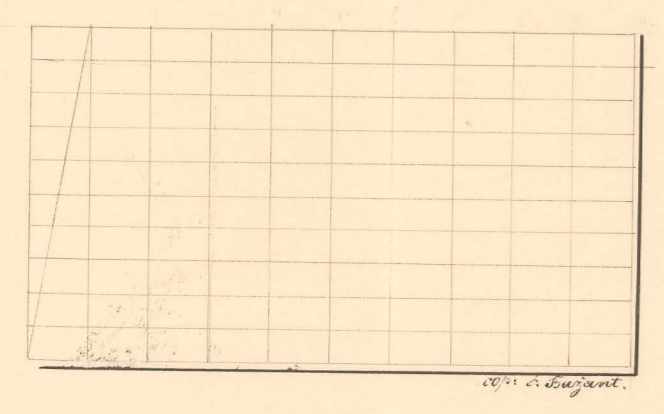
166

26



Lehensmappe
Flachsenberg

K. K. GEOLOGISCHE
REICHSANSTALT



gegen Noosberg.

Entworfen v. Schmitt 1889